

Auxiliary Hydraulics

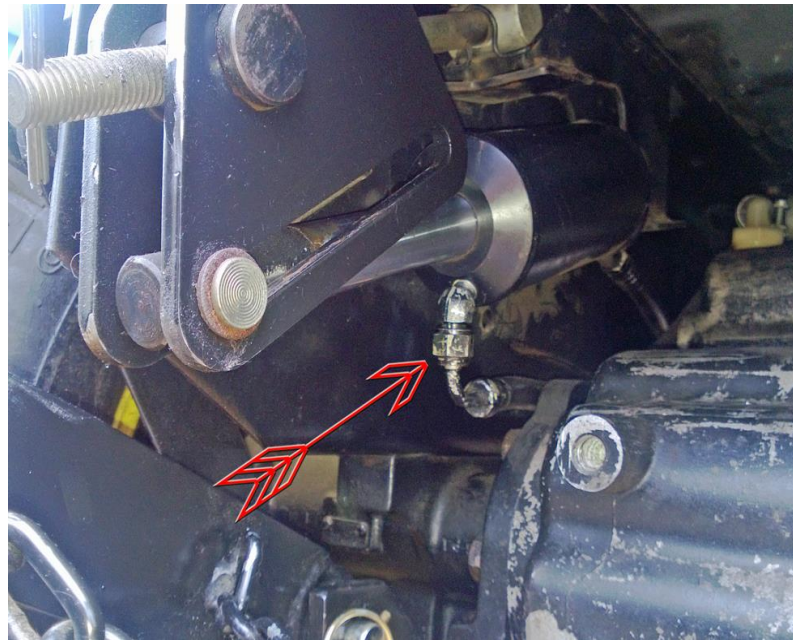
If It Didn't Come With It, We say add it!



INSTALLATION INSTRUCTIONS

Mower Deck Lockout Valve for 316(ONAN), 318, 330, 322, 332, 420 John Deere Garden Tractors

PREPARE TRACTOR	
1	Park tractor safely on a level surface.
2	Lower mower deck fully.
3	Stop engine and remove key.
4	Allow tractor to cool.
5	From the left rear of the tractor find the rear hydraulic cylinder and fitting as indicated.



Auxiliary Hydraulics

If It Didn't Come With It, We say add it!



- 6 Using a 5/8" open end wrench, loosen and disconnect fitting as shown. You will lose about a tablespoon of oil.



- 7 Using 9/16" open end wrench, remove original fitting as shown. Set fitting aside as it will be reused.



Auxiliary Hydraulics

If It Didn't Come With It, We say add it!



- 8 Remove plastic protector caps from supplied fitting and apply silicone paste or pipe dope to threads on both ends. Do not use silicone tape.



- 9 Using a 7/16" open end wrench, screw furnished fitting into cylinder where previous fitting was removed. Tighten securely but do not over tighten.



Auxiliary Hydraulics

If It Didn't Come With It, We say add it!



10 Using $\frac{3}{4}$ " open end wrench, screw furnished valve onto the supplied fitting installed in previous step. Tighten securely but do not over tighten. Orient the valve's open port generally down.



11 Apply silicone paste or pipe dope to threads on fitting as shown. Do not use Silicone tape. Apply drop of hydraulic fluid to flare side of fitting.



Auxiliary Hydraulics

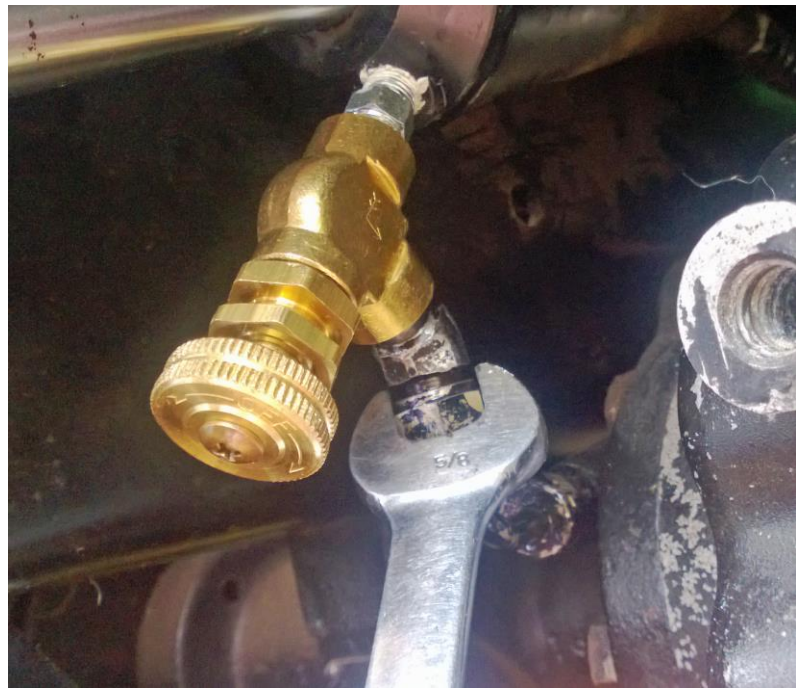
If It Didn't Come With It, We say add it!



- 12 Using 9/16" open end wrench, install original fitting as shown. Tighten securely but do not over tighten. Orient the fitting's flare end generally down



- 13 Using a 5/8" open end wrench, install fitting as shown. It may be necessary to hold the original fitting in position using a 9/16" open end wrench while tightening securely. Do not over tighten.

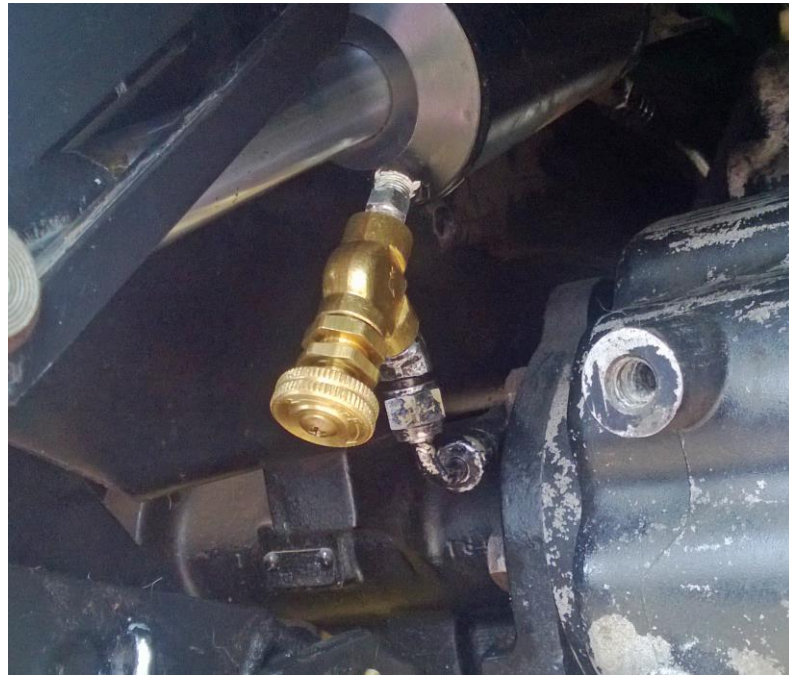


Auxiliary Hydraulics

*If It Didn't Come With It, We say **add it!***



- 14 The lockout valve is now installed. Rotate the knob clockwise to close or counter clockwise to open.



BE CERTAIN ALL FITTINGS ARE SECURELY TIGHTENED AT THIS TIME. START TRACTOR ENGINE AND LOOK FOR LEAKS. USE A PIECE OF CARDBOARD TO "WIPE ALONG" THE HYDRAULIC PARTS WHILE CHECKING FOR LEAKS.

DO NOT USE YOUR BARE HANDS TO CHECK FOR LEAKS WHILE THERE IS FLUID PRESSURE IN THE SYSTEM. HYDRAULIC FLUID INJECTION THROUGH THE SKIN IS DEADLY!

THE HYDRAULIC SYSTEM IS SELF-PURGING. Attach a hydraulic implement and cycle both circuits fully from stop to top at least three times.

YOUR HYDRAULIC KIT IS NOW READY FOR USE